

KILDARE - COUNTY GEOLOGICAL SITE REPORT

NAME OF SITE	Ballykane Hill		
Other names used for site			
TOWNLAND(S)	Kilrainy		
NEAREST TOWN	Edenderry		
SIX INCH MAP NUMBER	3		
NATIONAL GRID REFERENCE	265714 240191 = N657 401		
1:50,000 O.S. SHEET NUMBER	49	1/2 inch Sheet No.	16

Outline Site Description

A disused quarry on Ballykane Hill

Geological System/Age and Primary Rock Type

Carboniferous limestones, with Edenderry Oolite Formation infilling fissures within Waulsortian mudbank limestones.

Main Geological or Geomorphological Interest

The quarry demonstrates an interesting section of Carboniferous limestones, with Edenderry Oolite Formation infilling fissures within Waulsortian mudbank limestones. However it is poorly exposed and the old quarry must never have been extensive. Fossiliferous exposure is relatively common, with crinoidal limestone. Turner (1948) recorded a coral and 8 brachiopod species from this quarry. Wyse Jackson (2001) has recorded many additional species of different types.

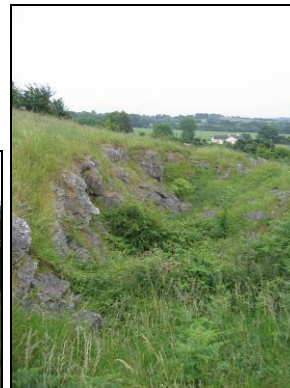
Site Importance

The site merits inclusion as a County Geological Site for the unusual Carboniferous limestone relationships and the relative rarity of such sites in Kildare, as well as a rich fossil fauna.

Management/promotion issues

The abandoned quarry is on private property and unsuitable for general promotion without appropriate arrangements agreed with the landowners. However, it is understood that local schools have used it over many years to seek fossils and look at geology in the field. There are no major cliffs or drops, so it is relatively safe. The adjacent Kilsaran quarry to the west is now approaching very close and may eventually consume the older quarry.

Below: a panorama view of the quarry entrance area.
Bottom: some crinoidal limestone.
Right: One of the overgrown upper quarry exposures



Ballykane Hill

